

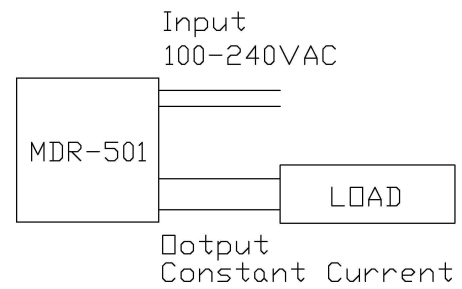
SPECIFICATIONS

MDR-501-1000-5-N

Features

- Operates at -40°C to 60°C
- Constant Current
- Higher Power Factor
- UL8750/1310 Class II compliance/Isolation
- Accurate output
- Miniature size
- Damp location approval

Wiring Diagram



Mechanical and Thermal

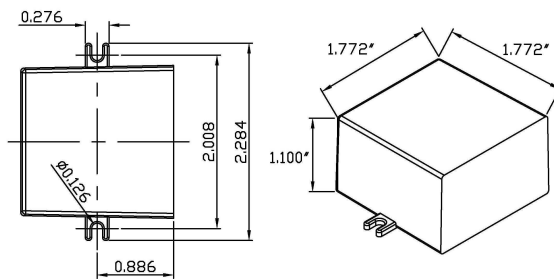
Dimensions

1.772"(L) x 1.772"(W) x 1.100" (H)

Weight 0.22pound

Lead Wire length 6 "(Standard)

Max. Case Operating Temp. 70°C



Protection

- Short circuit protection
- Overload protection
- Thermal protection
- Class II Protection

Electrical

Maximum load	6 W
Minimum load	3.5 W
Input Voltage	100-240VAC 50/60 Hz
Output Voltage/Current	6 VDC/1000mA
Power Factor	> 0.950
Max. T.H.D	< 13.8%
Efficiency	80 typ.

Note –

1. 350mA /500mA or 700mA are available, please contact technical sales.
2. UL file No: E340871



Macron Associate Co. – A OEM Luminary, Power-Supply company

NO.352, Peng-Yi Road, Taiping, Taichung, Taiwan 411

TEL: 886-4-22708357 FAX: 886-4-22767307 Email: tonyw@macrongroup.com

B0412